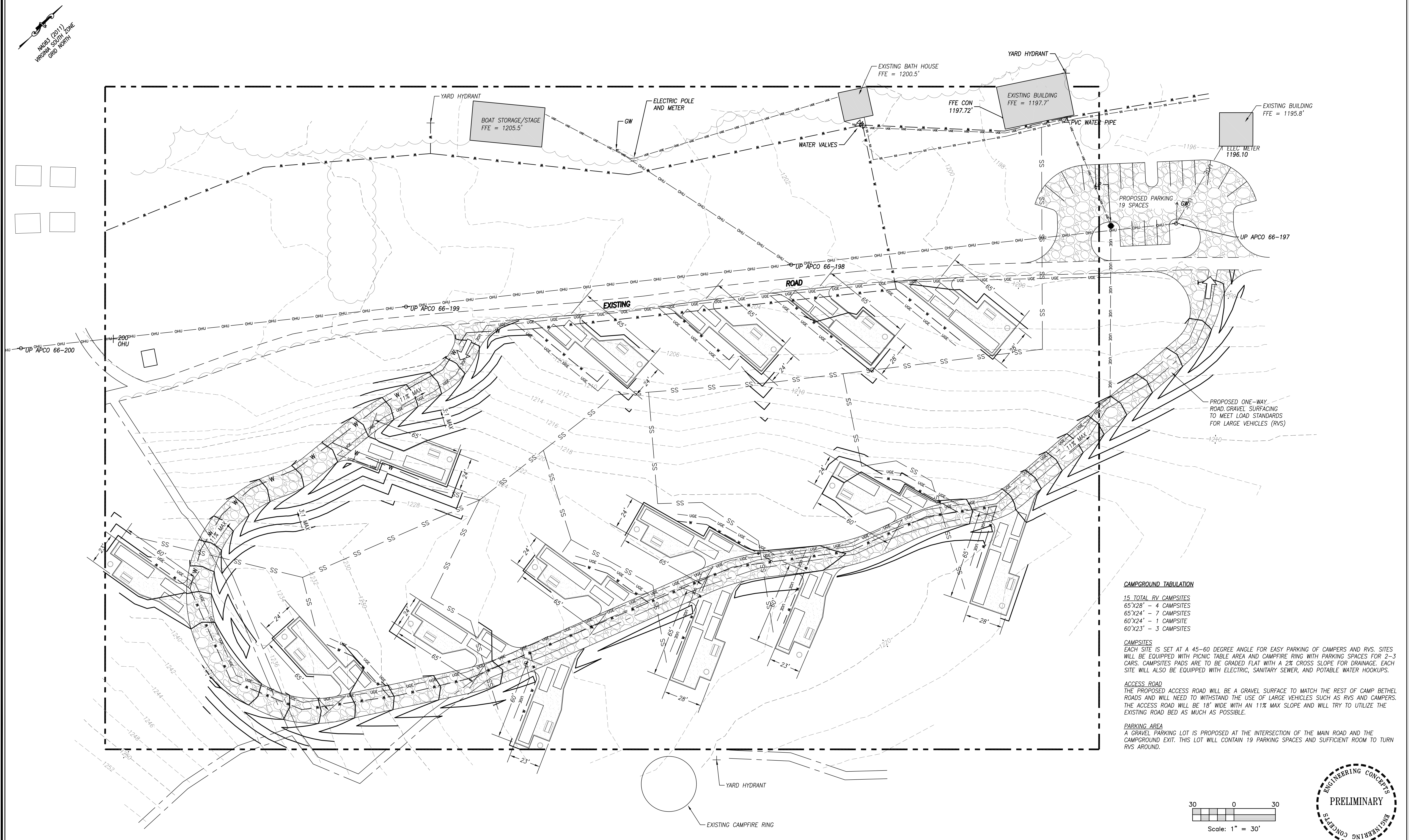
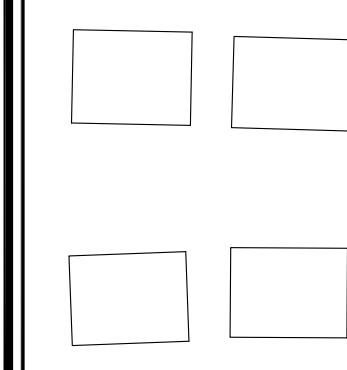


NAD83 (2011)  
VIRGINIA SOUTH ZONE  
680 NORTH

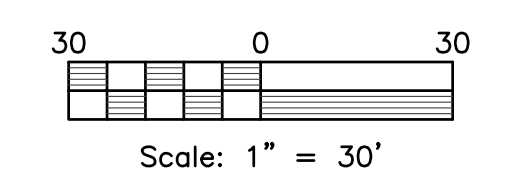


**CAMPGROUND TABULATION**  
 15 TOTAL RV CAMPSITES  
 65'x28' - 4 CAMPSITES  
 65'x24' - 7 CAMPSITES  
 60'x24' - 1 CAMPSITE  
 60'x23' - 3 CAMPSITES

**CAMPSITES**  
 EACH SITE IS SET AT A 45-60 DEGREE ANGLE FOR EASY PARKING OF CAMPERS AND RVs. SITES WILL BE EQUIPPED WITH PICNIC TABLE AREA AND CAMPFIRE RING WITH PARKING SPACES FOR 2-3 CARS. CAMPSITES PADS ARE TO BE GRADED FLAT WITH A 2% CROSS SLOPE FOR DRAINAGE. EACH SITE WILL ALSO BE EQUIPPED WITH ELECTRIC, SANITARY SEWER, AND POTABLE WATER HOOKUPS.

**ACCESS ROAD**  
 THE PROPOSED ACCESS ROAD WILL BE A GRAVEL SURFACE TO MATCH THE REST OF CAMP BETHEL ROADS AND WILL NEED TO WITHSTAND THE USE OF LARGE VEHICLES SUCH AS RVs AND CAMPERS. THE ACCESS ROAD WILL BE 18' WIDE WITH AN 11% MAX SLOPE AND WILL TRY TO UTILIZE THE EXISTING ROAD BED AS MUCH AS POSSIBLE.

**PARKING AREA**  
 A GRAVEL PARKING LOT IS PROPOSED AT THE INTERSECTION OF THE MAIN ROAD AND THE CAMPGROUND EXIT. THIS LOT WILL CONTAIN 19 PARKING SPACES AND SUFFICIENT ROOM TO TURN RVs AROUND.



**ENGINEERING CONCEPTS, INC.**  
 94 GREENFIELD STREET  
 DALEVILLE, VIRGINIA 24083  
 540.473.1253

Drawn	ACF	<b>PRELIMINARY CAMPGROUND LAYOUT CAMP BETHEL</b>	1" = 30'
Designed	ECI		APRIL 6, 2018
Checked			PROJECT: 17057
Approved			<b>01</b>