



328 Bethel Road, Fincastle, Virginia 24090

phone: 540-992-2940

CampBethelOffice@gmail.com

www.CampBethelVirginia.org



## Camp Bethel 2019 Summer Staff Information 10.31.2018

Page 1: Introduction to Camp Bethel, the Virginia District and the Church of the Brethren

Page 2: Camp Bethel Residential Summer Camp Counselor General Position Description 2018

Page 3: Camp Bethel Organizational Chart

Page 4: Camp Bethel Staff and Volunteer Standards

Page 5: Camp Bethel Staff and Volunteer Policies

Page 14: Camp Bethel's Small Group Camping Program Philosophy

### Introduction to Camp Bethel:

**Camp Bethel** is the outdoor ministry of the Virginia District Church of the Brethren that seeks to foster and build relationships with the Creator, with others, and with creation. This ministry is realized through our Christian camping programs, our services, and availability of our facilities to all people of all denominations and backgrounds. We welcome the participation of children and youth of all faiths, traditions, races, and nationalities.

We believe Jesus' message of life, hope, love and unconditional acceptance. Likewise, campers (and her/his cabin mate) should expect to share their camp group with other children who have different backgrounds, gifts and abilities. Jesus said, "Let the children come to me; do not hinder them, for the Kingdom belongs to such as these." (Matt 19:14)

In small groups of 10-12 campers and 2-4 counselors, campers will experience living in an intentional Christian community as the Body of Christ (1 Corinthians 12). Well-trained counselors and program staff lead hundreds of active, fun, educational activities. Through these experiences, with Jesus as our hope, campers come to understand that their relationships with each other and all creation are precious to God and worthy of our active care.

Camp Bethel programs began at this location in 1927. Camp Bethel is open all year for conferences, retreats, festivals, school groups and other family, church and community events. Supportive congregations, loving guests, faithful families and campers, exceptional food services, a sound program philosophy, excellent full-time and seasonal staff, and hundreds of devoted volunteers have established Camp Bethel as one of the region's best camping programs and facilities.

*"Where the whippoorwills are calling, where the crystal springs are flowing..."*

Our 1927 camp song evokes images of this blessed place: the forests rise to meet the towering Blue Ridge Mountains; abundant wildlife scampers through the fields and tree tops; the wash of waters gurgles in our streams and rises to fill the Big Spring; children and youth sing in a peaceful sanctuary of sun-filled days and star-lit nights. Camp Bethel is 470 sacred acres of forests, fields, ponds, streams and hills in Botetourt County. Our property connects to the vast Jefferson National Forest and a 3-mile trail-hike up through Horseshoe Bend to the Appalachian Trail. Our campers reside in facilities that range from rustic-comfortable to modern cabins, each with bunk-beds, electric lights, window-unit air conditioners and close access to bathrooms and showers. Our camp is a safe, special place, and your children and teenagers will be "happy campers!"

Learn more about Camp Bethel including our year-round events and our interesting history at [www.CampBethelVirginia.org](http://www.CampBethelVirginia.org).

### What is the Virginia District?

The Virginia District of the Church of the Brethren is made up of 92 congregations spread across Virginia, West Virginia and North Carolina (hence, "Vir-lina"). The approximately 10,000 members of these congregations own and operate Camp Bethel by electing a volunteer Virginia District Board and Outdoor Ministries Committee. Learn about the Virginia District Church of the Brethren and visit a nearby congregation at [www.virlina.org](http://www.virlina.org).

### Who are the Church of the Brethren?

Continuing the work of Jesus: Peacefully, Simply, Together. The Church of the Brethren is a Christian church similar to other mainstream Protestant groups such as Methodists, Baptists and Presbyterians. We base our practices and beliefs on Jesus' life and teachings and the New Testament. Steadily, lovingly, even radically, Jesus went about saving the world by serving its people. Because we believe Jesus' message, we seek to do the same. Our other distinctions include our peace position (Matthew 5:44) (shared with Quakers, Mennonites, Amish, and Moravians), emphasis on simple living (Romans 12:2) and Christian service (Luke 22:27), feet-washing during Communion worship service (John 13), and baptism by choice (Acts 2:37-39). The name "Church of the Brethren" was chosen in 1908 to emphasize a sense of family and community and was never intended to sound exclusively male. Rather, the Church of the Brethren views all people as children of God. Learn more about us at [www.brethren.org](http://www.brethren.org).

# Camp Bethel Residential Summer Camp Counselor

## General Position Description 2019



### **Minimum Qualifications and Skill Set:**

- Desire and ability to serve God by leading, mentoring, nurturing, and engaging with children and youth in outdoor Christian education programming.
- Ability to relate to children, peer group and employer; ability to be timely; ability to accept supervision and guidance.
- Good character, integrity, adaptability, enthusiasm, sense of humor, work-ethic, patience and self-control.
- Willingness to be outside of comfort zone, fully enthused, fun and eager to go above and beyond in service (from being over-the-top silly to performing mucky manual labor).
- 16yrs+ or 18yrs+ and age appropriate to counseling assignment (at least 2 years older than oldest camper).
- Minimum 2.5 G.P.A. for high school students and graduating high school seniors during current school year.

### **Responsible To:**

Assistant Program Coordinators, Program Coordinator, and Camp Director.

### **Camp Statement of Purpose and Mission:**

**Camp Bethel** is the outdoor ministry of the Virginia District Church of the Brethren that seeks to foster and build relationships with the Creator, with others, and with creation. This ministry is realized through our Christian camping programs, our services, and availability of our facilities to all people of all denominations and backgrounds. In small groups of 10-12 campers and 2-4 counselors, campers experience living in Christian community as the Body of Christ (1 Corinthians 12). Well-trained counselors and program staff lead hundreds of active, fun, educational activities. Campers come to understand themselves, each other and all creation as precious to God and worthy of active care.

### **Responsibilities:**

#### **1. To carry out the camp program.**

- Participate in two-week staff training.
- Guide unit and individual campers in participating safely and successfully in camp activities.
- Facilitate group building by fun, creative, interactive use of program opportunities and natural resources.
- Incorporate faith sharing, Bible study, prayer and worship into the unit's activities and experiences.
- Supervise all aspects of the camper's day.
- Ensure campers' proper treatment of natural surroundings, program equipment and camp property.

#### **2. To be in relational ministry and ENGAGE with campers and staff.**

- Ensure camper's and co-worker's physical and emotional safety. Learn the names, likes and dislikes of each camper.
- Create an enjoyable, fun, safe and open atmosphere in the unit, using preventative discipline and clear communication.
- Recognize and respond to opportunities for problem solving in the unit; model collaborative leadership with co-workers.
- Initiate, monitor and participate in unit activities that allow camper and unit success and promote group unity.
- Utilize camp program strategies for preventing or minimizing behavior problems and homesickness.
- Consult the Assistant Program Coordinators, Program Coordinator, or Camp Director when problems warrant.

#### **3. To fulfill other staff duties and roles.**

- Other duties may be assigned as needed by supervisory staff.
- Mentor C.I.T.s through positive role modeling to facilitate growth and competence in excellent counseling skills.
- Be a positive example of punctuality, appropriate cleanliness, work ethic, manners, fun and sportsmanship to campers, staff, parents and public.
- Follow staff policies and camp policies, including no use of tobacco, nicotine, alcohol and drugs.
- Encourage respect for personal property, camp property, equipment and facilities.
- Manage personal time-off in ways that do not detract from ability to fulfill duties.
- Maintain good public relations with campers, campers' parents/families and the public.

### **Staff Provisions:**

Overnight accommodations as assigned, meals (when dining hall is serving) and access to limited laundry facilities during contract.

### **Residential Summer Camp Counselor Salary:**

Coordinator/Senior Counselor/Adventure Counselor: \$274.00/week for 6 or 7 weeks plus \$100.00 for Lifeguard Certification. Returning Senior/Adventure Counselors receive an additional \$25 each week for each returning year.

Junior Counselor: \$137.00/week for 6 weeks plus \$100.00 for Lifeguard Certification. Returning Junior Counselors receive an additional \$20 each week for each returning year.

Additional paid work opportunities are frequently available on weekends and before Week 1 and after Week 7. Contract is negotiable.

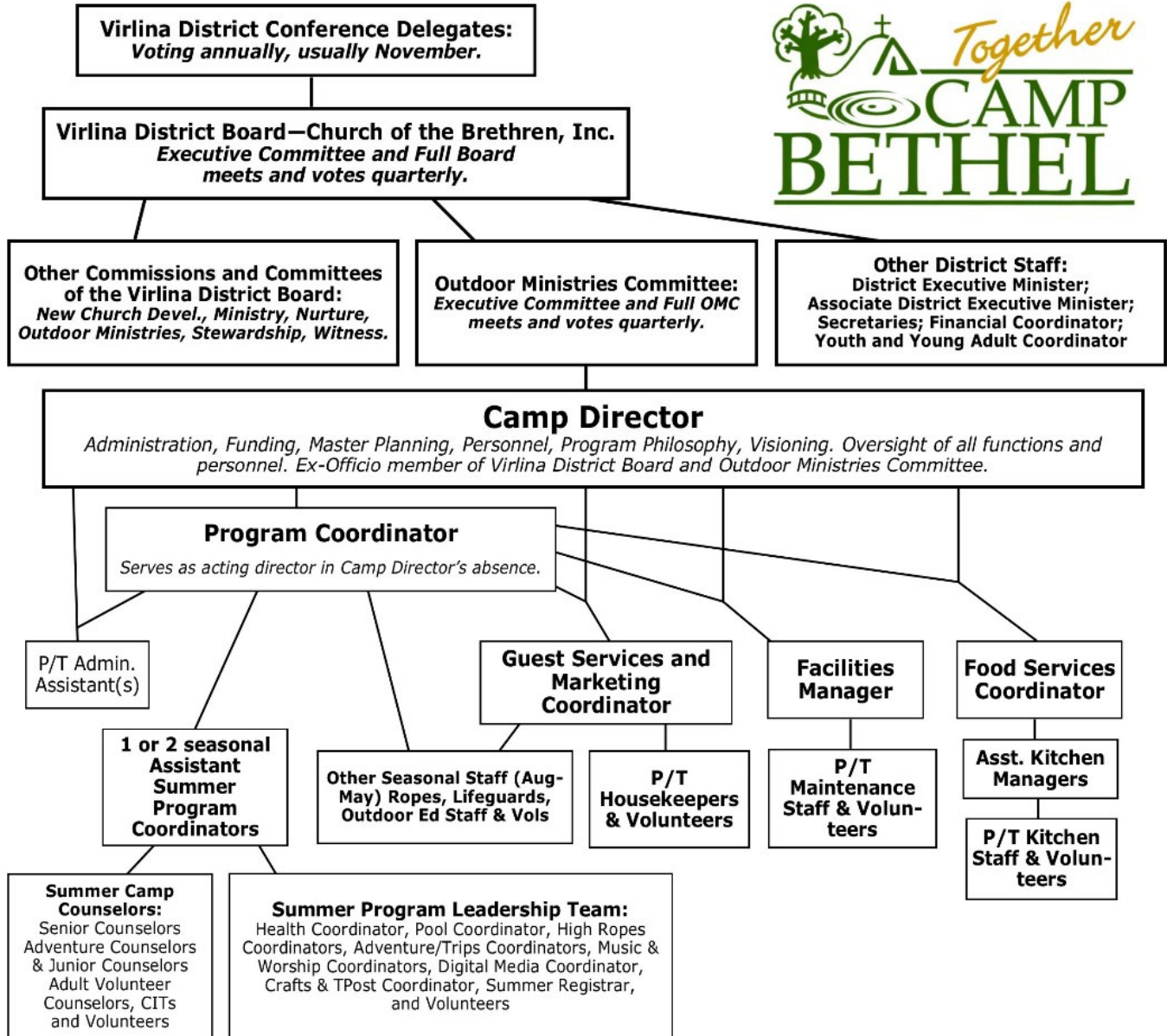
Coordinator Training and requisite Staff Training are provided at no cost to staff, and summer salary begins as noted on the Record of Agreement.

### **Dates of Contract:**

See Record of Agreement

# Camp Bethel Organizational Chart

Revised 05/24/2018



## Driving directions to Camp Bethel, 328 Bethel Road, Fincastle, Virginia 24090

### Heading South on I-81:

1. Take exit 162 (Buchanan).
2. Turn left (South) onto Route 11 toward Troutville.
3. Go 3.2 miles to Route 606 (Blue Ridge Turnpike). Mill Creek Baptist Church will be ahead on the right.
4. Turn left onto Route 606, Blue Ridge Turnpike.
5. Go 1.6 miles to stop sign.
6. Turn right onto Nace Road and go less than 1/10<sup>th</sup> of a mile to bridge on left.
7. Turn left onto bridge at Bethel Road. Drive under rail-road trestle.
8. Entrance to Camp Bethel is .3 of a mile straight ahead.

### Heading North on I-81:

1. Take Exit 156.
2. At end of ramp turn right onto Route 640, Brugh's Mill Road, and go .2 mile to stop sign at Route 11.
3. Turn left (North) onto Route 11.
4. Go approximately 2 miles.
5. Mill Creek Baptist Church will be on your left; just across from church turn right on Rte 606, Blue Ridge Turnpike.
6. Go 1.6 miles to stop sign.
7. Turn right onto Nace Road and go 1/10<sup>th</sup> of a mile to bridge on left.
8. Turn left onto bridge at Bethel Road. Drive under rail-road trestle.
9. Entrance to Camp Bethel is .3 mile straight ahead.

# Camp Bethel Summer Staff & Volunteer Standards and Policies, 2018

## I. Summer Staff & Volunteer Standards:

By joining our summer staff, you have agreed to abide by the following: (1) Camp Bethel's Residential Summer Camp Counselor position description; (2) Camp Bethel's mission statement and program philosophy; and (3) Camp Bethel's Summer Staff Standards and Policies. Now you are expected to fulfill these responsibilities and fully support and enhance our mission and program philosophy. How to begin? **Standards.**

The following standards represent the cumulative wisdom and experience of staff from the past years of summer camp ministry at Camp Bethel. Also, **YOUR** recent experiences and ideas will help define how these standards actually work, so please share, teach and model. Consider these standards as **ABSOLUTES** in building and being the Body of Christ.

**DURING MY TIME HERE THIS SUMMER, I COMMIT TO...**

- 1. Pray often.** However it is that you pray (silently, out loud, alone, group), pray a lot! God really wants an intimate relationship with you, so take the time (alone and together) to spend time with God. We will keep God (Word-Incarnate-as-Jesus-present-with-us) as head of our Body and of which you are an important part.
- 2. Be a model of cleanliness,** in my assigned staff housing, my camper cabin, in all public spaces, and in my personal appearance. We are many persons living in spaces made for few, so it requires maturity and creativity to be tidy. Strictly follow the "house rules" as created together. Keep your personal belongings in your assigned places and out of common space. At Camp Bethel, common space is God's space, thus common space (and the activities therein) is SACRED-God space. Each of us is accountable to the Body, so let's work hard to rejoice together more and suffer together less.
- 3. Be a model of Earth care.** As a participant in God's creativity, take joy in your decisions that benefit our Earth. Dry your laundry on the drying lines. Recycle what you can. Turn off the TV! Turn off lights, fans, and other electronics when you're not there. Manage the cooling of your housing or cabin with creatively timed window open/close, (use your knowledge of Science: convection and heat-transfer). Practice "Leave-No-Trace" camping-hiking-living ethics.
- 4. Be "ready" two days in advance.** Keep your own updated to-do lists and strictly follow lists from the Director, Program Coordinator, and the Assistant Program Coordinators. Don't put off the tedious stuff (cleaning, paperwork, duties, laundry, moving into your cabin, etc.). Keep a daily designated time to clean up and prepare for what's ahead; be ready to be ready.
- 5. Resolve and manage conflict in healthy and mature ways.** Don't gossip, don't allow gossip in your presence, and gently scold those who repeat gossip. Find an appropriate time to approach conflict early while de-escalating the emotions. Speak the truth in love, and follow the model of Matthew 18:15-17.
- 6. Keeping my energy high for everything and everyone all summer.** You owe it to each other and your campers to keep up with your sleep, especially on weekends. Make the repetitive fresh, new and exciting by being creative. Eat right, keep hydrated, and if necessary, use caffeine!
- 7. Be a contributing member of a cohesive, inclusive and welcoming Body.** Reach out to staff and volunteers you haven't gotten to know very well. Mix up your "usual" group and avoid cliques. Offer rides on weekends, and make an effort to attend and contribute to communal activities.
- 8. Take action on what I observe,** (if I can think it, I will do it and address it). Be the "I'll do it!" staff member by volunteering for every work task. Don't dictate, but contribute. No whining! Take out the trash and put items back in their correct places, EVEN if you aren't the guilty party. If you know who's guilty, speak the truth in love.
- 9. Support each unit's unique relationships with a servant's heart.** Make going out of your way to help each other commonplace while honoring the sanctity of each small group. Don't disregard your unit's needs.
- 10. Be 100% invested in our collective ministry.** "Fun people can have fun doing anything!" Make whatever you're doing enjoyable for yourself and those around you. Focus on the tasks at hand. Keep up with sleep and your personal devotional and prayer times. Recharge over weekends, ready to minister each Sunday at 2:00pm.
- 11. Be fun, be positive, and keep a good sense of humor.** Smile! Joke! Laugh! High-five! Loosen up! Do something creative and fun! Spread the love! Don't sweat the small stuff, because it's almost ALWAYS small stuff.
- 12. Check-in regularly with each other and the Coordinators.** Use your "binocular vision" (seeing from the perspective of others). All resident staff, volunteers and CITs will attend nightly corporate worship and daily Morning Watch. Non-counseling staff meets nightly for devotions and sharing after groups dismiss. Coordinators as mentors check-in with their assigned counselors at least once weekly.
- 13. Strictly follow camp and staff policies.** The camp and staff policies were established to create the best possible atmosphere and community for building and living as the Body of Christ.



## II. Summer Staff & Volunteer Policies, Camp Bethel 2019: 10/29/2018 1:04 PM

1. Affidavit Regarding Staff/Vol Conduct & Contact w/ Campers & Minors
2. Age requirements of staff
3. Alcohol, Tobacco, Drugs, Nicotine, Vaping, etc.
4. Appearance, Dress, Hygiene and Public Behavior
5. Attendance
6. Camper Wellness & Minor Wellness
7. Cell Phones
8. Compensation
9. Computer & Internet Policy
10. Computer Use
11. Duties of Employee (Summer Staff)
12. Electronics, Digital Devices, etc.
13. Employment
14. Equipment Use (including Computers)
15. First Aid, Health Emergencies, Medication
16. Funding for Campers
17. Grievance and Disciplinary Procedures
18. Hammocks
19. Harassment
20. Housing for Staff
21. Housekeeping
22. Laundry
23. Mail, Phone, E-mail
24. Minors not permitted over camp weekends
25. Ministry & Camp Image
26. Pets not allowed
27. Photos, Video, Audio
28. Ownership in Camp Bethel
29. Position Descriptions
30. Relationships Between Staff, Staff and Campers
31. Safety of Camp Community
32. Shoes, Sandals & the rule of "Closed-Toe"
33. Supervision of Campers & Ratio
34. Staff Manual
35. Swimwear
36. Term of Agreement & Hours of Work
37. Termination Procedures
38. Time-Off/Unpaid Leave/Wellness Breaks
39. Tips or gratuities
40. Training for Staff
41. Training for Staff: Late Hires
42. Training for Staff: Mid-Summer In Service
43. Vehicles, Parking, Driving
44. Weapons
45. Weekend Food
46. Weekend Guests
47. When Out in Public
48. Protocol to Prevent One on One Camper/Staff Interaction
49. The 7 Absolutes of Camp Counseling
50. Your Director's Expectations
51. You Are Important to our Camp Culture

### 1. Affidavit Regarding Staff/Volunteer Conduct and Contact with Campers and Minors

Prior to working with campers, all staff and volunteers must agree to and sign an "Affidavit Regarding Counselor Conduct and Camper-Counselor Contact" which includes specific guidelines for the discipline of children, guidelines for adult-to-minor contact, counselor-to-camper contact, information about state laws concerning child abuse, guidelines for staff working with children, and other instructions. You will receive this affidavit in your Record of Agreement Packet, and we will review it together prior to signing during staff/volunteer training.

### 2. Age requirements of staff

- a. At least 80 percent of primary supervisory staff will be 18 years of age during camper weeks.
- b. Junior Counselors, CITs and adult volunteers will be at least two years older than the oldest camper. When counting total supervisory ratios minors will not be included in ratios.
- c. Junior Counselors will be at least 16 years of age; CITs at least 15 years of age; Adult Volunteers at least 18 years of age.

### 3. Alcohol, Tobacco, Drugs, Nicotine, Vaping, etc.

On-site use of alcohol, tobacco, nicotine or drugs is **prohibited**. On-site possession of alcohol or drugs is prohibited, and on-site possession of tobacco or nicotine (gum, patches, e-cigs, vapors, etc.) is greatly discouraged for adults and prohibited for minors. Staff engaging anywhere in any illegal activity during contract (including time-off) risk termination of contract. If activities (legal or illegal) or choices during time-off detract from your ability to fulfill your job description or to work with children, your contract could be terminated.

### 4. Appearance, Dress, Hygiene and Public Behavior

Think like a parent entrusting their child to a stranger. Staff should maintain a professional appearance while at Camp Bethel. Parents feel comfortable entrusting their children for a week to a clean, neatly dressed counselor. When meeting parents, make eye contact with them, offer your hand in greeting, introduce yourself, and take some time to talk to them.

Campers are highly influenced by the dress and hygiene examples they see from their counselors. Especially on Sunday and Friday, try to look your best. We will all wear our summer staff tee shirts on Sunday evening when the campers arrive and Friday evening for camper pick-up. Do not alter your staff shirt.

What may be acceptable public attire in a high school, on a college campus or in the mall is not necessarily appropriate in a church camp setting. Examples of inappropriate dress include pajamas, visible underwear/bras, string bikini, clothing so tight that it "leaves nothing to the imagination." Avoid clothing that is too revealing or too tight, and avoid clothing with suggestive humor, political division, adult innuendo, theme or subject matter inappropriate for children. Do not wear leggings as pants and shorts must have a 3-inch inseam.

Camp Bethel is a summer camp, not the mall. Dress appropriately for high-movement, running, hiking, and active outdoor work and play. See "Swimwear" and "Shoes and Sandals" for further dress guidelines.

Camp Bethel is respected for its quality program and leadership. All staff and persons attending Camp Bethel are expected to behave in a manner conducive to Christian programming and youth development. Strictly follow staff policies, camp rules, equipment procedures, and "how-to" procedures.

### 5. Attendance

All counseling and non-counseling staff will attend and participate in "All-Camp" activities unless otherwise arranged with the Camp Director. This includes, but is not limited to: Morning Watch, meals, singing and announcements program after meals, evening activities, special programs, evening worship, registration, and closing circle/picnic. Non-counseling staff should attend other units' activities by invitation only, and these visits should enhance the campers' Christian education experience and the small-group philosophy.

All counseling and non-counseling staff will attend staff meetings. Being unexcused or frequently late to staff meetings may be grounds for reassignment or termination of your contract. Unless otherwise announced, our Sunday staff meetings begin at 2:00pm and our Friday staff meetings begin when the last camper leaves after 6:30pm.

**No staff person, counseling or non-counseling, should leave the camp property from Sunday 2:00pm through Friday camper dismissal without informing the Assistant Program Coordinator(s), Program Coordinator, or Camp Director.**

### 6. Camper Wellness and Minor Wellness

The first responsibility of each and every staff member is the health and welfare of the campers. Each staff member is expected to take every care to protect the privacy and person of each camper. All staff and volunteers must actively pursue the well-being of campers and minors. This includes, but is not limited to, avoiding sunburn, insect bites and poison ivy, avoiding injuries, rashes, blisters, scratches, etc.

Physical punishment, verbal abuse, ridicule, foul language, harassment, any sexual contact between staff and campers or staff and minors is forbidden and will be grounds for immediate dismissal and legal prosecution. Caution should be taken any time a staff member or volunteer is alone with a camper or minor (outside the view of other staff members). Staff and volunteers should avoid situations of one staff/volunteer and one camper or minor. This is for the protection of the camper/minor and the staff member, as well as the camp.

## **7. Cell Phones**

Staff and volunteers are prohibited from using cell phones to take photo, video or audio of campers or any minor under age 18. To ensure you are compliant with policies, simply do not use your phone for photos, video or audio recording. See #27, "Photos, Video, Audio" for more information. Do not use your phone as your timepiece or your alarm clock; instead, wear a watch with an alarm.

If you own a cellular/digital phone, you should bring it to camp IF YOU CAN. Campers, though, are not allowed to bring or use cell phones. There will be NO "casual" cell phone use during the camp week; turn them off and leave them in your backpack for emergency use only. Inform your family and friends that you are NOT available to receive calls or texts during the camp week. For Adventure Counselors or Counselors on day trips, a cell phone is helpful if an emergency arises while you are off camp property with your campers. At least one working cell phone should be with staff at the Adventure Village and with staff on hikes; bring it if you've got it. Using cell phones is for emergency only and is not a substitute for procedural safety or a "way out" of a difficult situation. Other electronic/digital devices are for weekend use only.

## **8. Compensation**

There shall be a mutual understanding documented in writing ("Record of Agreement") of the compensation and benefits for each employee. Pay days are noted in the *Record of Agreement*. Salaries should be held in strict confidence. During contract (including weekends for adult staff), the Employee is entitled to overnight lodging at the camp and use of program equipment for herself/himself and no others at no charge, and the Employee is entitled to free meals when the camp kitchen is serving and provisions for meals when the camp kitchen is closed.

Returning Senior Counselors receive an additional \$25 each week and returning Junior Counselors receive an additional \$20 each week. Senior Counselors and Junior Counselors receive \$100 for Lifeguard Certification. Additional compensation is provided for other additional certifications.

## **9. Computer and Internet Policy**

1. We are fortunate to be able to provide you with the privilege of wireless internet access during your time off. Your access to camp's wireless internet is not a right, it is a privilege. Internet access at camp is susceptible to frequent poorly-timed outages, and is thus not guaranteed to be functional at any time.
2. Personal and professional use on weekends of camp's wireless internet connection should be for the strengthening of the camp's mission, your own personal growth as a disciple of Christ (as defined by you), and the building of the kingdom of God.
3. Internet use at camp should be of the kind deemed appropriate in a church. This includes:
  - a. Web surfing
  - b. Your use of language, subject matter, etc. used in e-mails, IMs and documents
  - c. Photos, images, video, etc. (see #27 "Photos, Video, Audio").
  - d. The nature of your computer activity (benevolent vs. malevolent)
4. Simply do not use the camp internet connection for questionable or inappropriate material. Do not use the camp internet connection (our bandwidth) for downloads larger than 2MB.
5. See #25, "Ministry and Camp Image" for further internet policies.

## **10. Computer Use**

The camp office and its equipment and supplies are off limits to summer staff without the express permission of the Camp Director.

Computers: Staff should plan on being away from e-mail and internet during camper weeks. Local public libraries with public access computers are open on Saturdays. Computers in the camp office are NOT available for use. Do not download anything onto someone else's computer; shut down properly. Do not save any work on someone else's computer; use a virus-free USB memory stick.

## **11. Duties of Employee (Summer Staff)**

- A. Employee will be responsible to the Camp Director, the Program Coordinator, and the Assistant Program Coordinators.
- B. Employee will be expected to complete their term of agreement. In general your term of agreement in 2019 is from May 27 through July 20; (Adventure and Leadership Staff work through July 27).
- C. Employee will meet the qualifications and fulfill the responsibilities described in the position description of Residential Summer Camp Counselor at Camp Bethel.
- D. Employee will adhere to the Camp Bethel Summer Staff/Volunteer Standards and Policies.
- E. Other duties will be assigned as needed. It is expected that all employees will help accomplish whatever needs to be done for the good of the Camp.

## **12. Electronics, Digital Devices, etc**

Electronics are strongly discouraged and only for use on weekends or during personal time off, but you may bring your laptop computer, digital devices, electronics, etc. Bringing these items is at your own risk. Camp humidity tends to be bad for electronic devices, especially computers and digital devices. All personal electronic devices are for weekend use only, are to be inaudible outside buildings, and are to be kept in the staff area away from campers during camp weeks. We try to distract campers and staff away from the "usual worldly stuff" during camp. Your weekend time could be better spent than staring at a screen; there's a lot to do in our region! (and there's always lots of laundry to wash!) This will be discussed further during staff training. See the Staff Gear List for more information. Do not bring music, games, movies, etc. that are "Explicit" or rated "R" or "M."

### **13. Employment**

All employees are employed at will.

Summer Staff: Employees of Camp Bethel whose primary work is during the summer camp program shall be employed by the Camp Director in consultation with the Program Sub-committee of the OMC. The general employment term in 2019 is from May 27 through July 20; (Adventure and Coordinator Staff work through July 27).

Camp Employees: Employees of the District Board whose primary work is at Camp Bethel (Program Coordinator, Maintenance Manager, Food Services Director, and all part-time staff) shall be employed by the Camp Director in consultation with the OMC. Such employees are responsible first to their immediate supervisor and then to the Camp Director. The Camp Director shall be employed by the Virlina District Board - Church of the Brethren, Inc. upon the recommendation of the Outdoor Ministries Committee (OMC). The Camp Director shall be directly responsible to the Outdoor Ministries Committee.

### **14. Equipment Use**

Staff are welcome to use the camp's program equipment on weekends. Always follow proper usage procedures and safety guidelines. If equipment is damaged while in your use, you will be expected to fix it or replace it. Staff should help in maintaining equipment that is in good working condition. If there is a need for additional or better equipment, please inform the Director in writing. Most camp supplies (except pool and crafts) will be checked out from the Program closets. All staff will help keep the closets clean.

The maintenance areas (New Shop, Old Shop, etc.) and all maintenance equipment and supplies are off limits to summer staff without the express permission of the Maintenance Manager.

The camp office and its equipment and supplies are off limits to summer staff without the express permission of the Camp Director.

### **15. First Aid, Health Emergencies, Medication**

All summer staff will be trained and certified in American Heart Association First Aid & CPR during Staff Training. During camper weeks, a Health Coordinator and/or volunteer Medical Director is available for consultation. If, however, you are injured or become ill and we are unable to give you appropriate care at the camp, one of the program staff will drive you to the nearest hospital (about 30 minutes away). If a serious injury, emergency, or illness prohibits you from fulfilling your contract, you will be paid pro-rated for days worked.

For staff medication, any staff or volunteers under 18 must check medication with the volunteer medical director and/or Health Coordinator for appropriate usage and storage guidelines. Adult staff and volunteers must keep personal medications in appropriately inaccessible storage away from campers and minors. Also see the Camp Bethel Staff Health History form.

### **16. Funding for Campers**

In April of 2002, the camp's Outdoor Ministries Committee voted to discontinue camper discounts given to volunteering parents. That program was tried as an incentive to volunteerism, but a review indicated no increase in volunteerism. Campers WILL continue to benefit from a variety of funding sources and options including Virlina churches' Good-as-Gold program and Camp Bethel's "Campership" scholarship program.

### **17. Grievance and Disciplinary Procedures**

Should there be a disagreement over the interpretation of camp policies or a grievance related to one's duties or relationships with fellow staff members, it should be reported to the Assistant Program Coordinator promptly. Should the Assistant Program Coordinator be the source of the grievance, the staff member may report the grievance to the Program Coordinator. If the Program Coordinator is the source of grievance, the staff member may report the grievance to the Camp Director. If the Camp Director is the source of the grievance, the staff member may report the grievance to the Program Coordinator.

Grievance Procedure: In the event an employee has concerns or grievances, the employee shall discuss the concerns or grievances with the employee's supervisor, (counselors to APC, APCs & program staff to Director). Any concern which cannot be adequately handled by the employee and the employee's supervisor shall be pursued in sequential order as follows: (1) a written statement by a camp employee to the Camp Director, (2) a written appeal by a camp employee to the Executive Committee of the OMC.

Disciplinary action concerning any summer/seasonal camp employee shall be initiated by the Camp Director in consultation with the OMC Executive Committee and the Virlina District Board Executive Committee. Situations involving sexual misconduct, violence, theft or financial malfeasance may result in immediate termination. Other employee misconduct including insubordination, inadequate quality or quantity of work, disclosure of confidential or privileged information, failure to follow established procedures and channels, and/or any other unprofessional conduct may result in termination. Disciplinary action shall be proportional to offense and may include any appropriate action ranging from an oral warning, a written warning, suspension or termination. All disciplinary actions shall be documented by the Camp Director. Records shall be filed by the Camp Director with such attorney as is retained by the Virlina District Board - Church of the Brethren, Inc.

All employees of Camp Bethel are employed at will.

### **18. Hammocks**

Hammocks are not to be used during the week while campers are present including during Home-in-the-Woods and/or overnight campouts (with exception of inside the AV huts and off-site overnight trips). On weekends, hammocks may be used appropriately. No hammocking close to roadways or across roads; no hammocking with the opposite sex.

### **19. Harassment**

Camp Bethel is meant to be a safe place for all campers, staff, volunteers and guests. Language, jokes, gestures, and/or touch of a sexual, racial or ethnic nature are not permitted between campers, between staff and campers, between staff members or between staff members and volunteers or guests. If a staff member has a grievance with a fellow staff member it should be reported immediately to the Assistant Program Coordinator(s), the Program Coordinator or the Camp Director. (see also #17 Grievance and Disciplinary Procedures).

Camp Bethel and the Virlina District expressly prohibit any form of offensive behavior or behavior that interferes with the ability of any employee to perform his or her job duties. The District prohibits any form of sexual, racial or ethnic harassment of employees and co-workers. Any Camp employee who believes that he or she has been the subject of such harassment should report the conduct to the Camp Director.

## **20. Housing for Staff**

Housing for staff is provided throughout your term of agreement. In general your term of agreement in 2019 is from May 27 through July 20; (Adventure and Coordinator Staff work through July 27). No campers are permitted in the staff-only areas or in staff housing. The staff areas will be equipped so that each individual staff member has at least one bunk and one shelf to store personal and weekend items. As with cars (see #43 Vehicles), during the camper week staff should avoid constantly having to go to the staff area to get something. As a courtesy to other staff, weekend quiet hours are from 10:00pm to 8:00am. No males allowed in female bedrooms; no females allowed in male bedrooms. Likewise, no males allowed in female camper housing; no females allowed in male camper housing. Staff may sleep in their camper cabin on weekends, especially when hosting a family member guest. When making sleeping arrangements beyond normal staff housing (ex: for visiting family) while on Camp Bethel property, non-married persons of the separate sex must sleep in separate facilities. These policies will be discussed further during Staff Training (also see #46 "Weekend Guests" and #21 "Housekeeping").

The Coordinators will see to it that staff members are provided with plenty of weekend options for R&R and wholesome activities. All camp facilities, including staff housing and the contents therein, are subject to random, unannounced inspections for safety and cleanliness.

## **21. Housekeeping**

All staff members are responsible for care of the camp's buildings and equipment. Counselors are responsible for the cleanliness of their cabin during the camp week. They are also responsible for assuring that the cabin they are assigned for the week is clean and ready for the next group. Counselors are required to clean their cabin and their staff housing areas before they are released Friday evening for the weekend, per inspection by the APC or other approved staff.

Communal living requires the maturity and self-discipline of all staff members to ensure appropriate cleanliness. Do not put off cleaning to another time. If another person leaves a mess, call it to their attention and hold them to their responsibilities. Ultimately, it is the opinion of the Assistant Program Coordinators, Program Coordinator and Camp Director whether further cleaning by summer staff is necessary.

## **22. Laundry**

What a luxury and privilege to be able to provide you access to camp-owned washing machines (Laundry House and drying lines behind A-frames) for use during your time off. You are responsible for keeping the laundry house clean and tidy, including cleaning the lint trap of the dryer. Also, there are local laundromats in nearby towns. If you are unfamiliar with doing your own laundry, we'll teach you. Experienced staff will assist you in this cultural handing-down of knowledge to the next generation of Laundromat lads and ladies. Oh so many sudsy memories to be made... Camp Bethel encourages the use of environmentally friendly, phosphate-free detergents and chlorine-free detergents. Please use drying lines as your first drying option; using electric dryers should be avoided when possible. If washing machines break down, staff will have to make other washing arrangements (in-town laundromats, washing by hand in sinks).

## **23. Mail, Phone, E-mail**

Your mail can be sent to the camp address; you will receive it the day it arrives. The camp address is:

**Your name, c/o Camp Bethel, 328 Bethel Road, Fincastle, VA, 24090.**

Give outgoing post-mail to the APCs for delivery to the mailbox.

Inform your family and friends that you are NOT available to take phone calls, cell phone calls or e-mails during the camp week. We will check the answering machine daily and deliver any messages to you when appropriate. In the case of an emergency, family or friends should contact the camp office at 540-992-2940.

Friends and family may send you one-way e-mail via the camp web site, [www.CampBethelVirginia.org](http://www.CampBethelVirginia.org), using Bunk Notes. Bunk Notes cost \$1 per message and will be printed and delivered to you at lunch daily. Senders should click on the "Click Here for Camper E-mail" button (see information on Bunk1.com in the Staff Manual) and choose "Summer Staff."

Phone calls may be made by counselors in the office with permission from the Assistant Program Coordinator(s), Program Coordinator or the Camp Director. All phones are off limits to campers and are not to be used by campers.

## **24. Minors not permitted over camp weekends**

Minors under the age of 18, be they staff, CITs or volunteers, may NOT stay overnight at Camp Bethel during time off weekends, Friday night 8:00pm (or immediately following the dismissal of staff meeting) through Sunday 8:00am. The only exceptions are June 7-9 during Staff Training, because staff are on-duty and July 19-20, for staff closing ceremonies and duties. Parent pick-up for minors is on Friday of each camper week after 8:00pm, but not until the dismissal of staff meeting. Parents or adult relatives of staff and volunteers who are minors are welcomed and encouraged to attend our Friday closing family dinner beginning at 5:20pm to watch their daughter/son in action with campers during the closing ceremonies. Minors 16 and 17 years old who drive themselves to and from camp must depart immediately after the dismissal of staff meeting.

If travel distance impedes parent pick-up, parents should contact the Assistant Program Coordinators or the Program Coordinator to make arrangements. Overnight lodging on site for parents with their children may be available.

## **25. Ministry and Camp Image**

Camp Statement of Purpose and Mission: Camp Bethel is a ministry of the Church of the Brethren that seeks to foster and build relationships with the Creator, with others, and with the creation. This ministry is realized through our Christian camping programs, our services, and the availability of our facilities and programs to all people.

Each employee (paid or volunteer) of Camp Bethel and the Virginia District Board - Church of the Brethren, Inc. is considered a minister regardless of formal ministerial status or denominational affiliation. Every individual contact made by every individual employee is a reflection upon the mission and ministry of the district, the component congregations and the denomination. All employees will, therefore, manifest a Christ-like spirit, attitude, demeanor and lifestyle in the performance of their duties regardless of location and/or circumstance.

Use of camper names, images, or personal information outside of the specific camp program is prohibited. Use of the Camp Bethel name, logo, information or any images from or associated with Camp Bethel and the Virginia District Church of the Brethren must be in accordance with the Christian ministries therein. You could be held liable for any negative or hurtful use in any form of Camp Bethel or



Virlina District images, names, logos or any information. This includes personal academic work, letters, artwork, e-mails and personal or public blogs or web sites or social media such as Twitter, FaceBook, Instagram, etc.

## **26. Pets not allowed**

Pets are not allowed on camp unless arrangements are made to include them in the "Heifer Shed" or by permission by the Camp Director.

## **27. Photos, Video, Audio**

We expect and encourage you to document the camp experience by taking photos, video and/or audio of your time at Camp Bethel. We also expect you to freely share copies of photos, video and audio with us for use in camp promotion and our Photo/Video Flash Drives.

Staff and volunteers are prohibited from using cell phones to take photos, video or audio of campers or any minor under age 18. To ensure you are compliant with policies, simply do not use your phone for photos, video or audio recording.

Photos, video or audio taken by staff or volunteers of Camp Bethel's site, staff, volunteers, campers or guests either on site while on duty or off duty, or off site while on duty, either with personally-owned cameras or devices or with camp-owned devices, is the sole and exclusive intellectual property of the Virlina District Board - Church of the Brethren, Inc, DBA Camp Bethel.

Staff and volunteers (1) are encouraged to document the camp experience with digital photography, video or audio, (2) may keep copies of the photos, video or audio they capture, and (3) agree to freely share copies of these photos, video or audio with the Camp Director and Program Coordinator for use in camp promotion.

Personal use or interpretation of camp property (photos, video or audio) must positively represent the mission and ministry of Camp Bethel. Public use (anything shared through the internet, including e-mail, blogs, web sites, Facebook, etc) or interpretation of camp property (photos, video, audio) must positively represent the mission and ministry of Camp Bethel and **may not include names of minors**. See also #25 "Ministry and Camp Image."

Use of Camp Bethel photos, video or audio indicates your consent to the interpretation of this policy by Virginia law, as well as your consent to jurisdiction and venue in the courts located in Botetourt County, Virginia. Any necessary actions regarding the misuse of Camp Bethel property shall be brought and maintained in the courts located in Botetourt County, Virginia, and you hereby waive all objections to jurisdiction and venue therein.

## **28. Ownership in Camp Bethel**

One of the best perks gained from working at Camp Bethel for the summer is that NOW, you always have a "home away from home." As long as good people like you continue serving at Camp Bethel and supporting Camp Bethel, our camp will always be here. Help keep our camp looking its best. Make an effort to pick up litter or debris. Take good care of the facilities and the program equipment. Our hope is to establish long-range usage practices for our equipment and facilities so that our program expenses can be lowered and our staff salaries can be raised. Makes sense, eh?

Some of our equipment use and facility procedures are very detailed, but the procedures are an effort to preserve our equipment as long as possible. Tools, recreation equipment, tents and stoves are NOT cheap. The less money we have to spend on program equipment, fixing toilets, window screens, or replacing broken items, the more we can spend on camper scholarships and your staff salaries.

Also, once you've been a Camp Bethel Staff member, you're ALWAYS a Camp Bethel Staff member. The need for your involvement in this community does not end in August; it continues for as long as Camp Bethel exists. We will always need your prayers, your time, your donations and your support.

## **29. Position Descriptions**

Position Descriptions are available from the Camp Director for your information, and my include the following: Maintenance Manager; Food Services Director; Program Coordinator; Assistant Program Coordinator; High Ropes Coordinator; Mixed Media Coordinator; Resident Counselor; Day Camp Counselor; Pool Coordinator.

## **30. Relationships Between Staff, and Staff to Camper**

Romantic relationships between adult staff/volunteers and minor staff/volunteers are absolutely forbidden, (ex: 18-year old dating 17-year old). **Romantic relationships between any staff/volunteers and campers is forbidden at any level.**

You have been hired as a summer staff member to perform specific duties as a part of Camp Bethel's summer program of Christian Education. This Christian Education work is intense, relational ministry between staff and campers. It is our goal, that by attending a camp program, campers leave with a better understanding of God, Jesus Christ and their Christian faith. Any distraction from our goal ultimately has a negative effect on our campers. Romantic relationships between adult staff members would cause distraction from your work as a counselor, distraction from your relational ministry to your campers, and distraction to the Christian community of fellow summer staff. Therefore, romantic relationships between staff members must not distract from your ministry or detract from our tight community.

You are expected to live as the Body of Christ as described in Corinthians 12. All actions and words should be expressed in Christian love. While in the presence of campers, parents, and co-workers, staff are expected to behave in a professional manner. In the presence of campers, parents, and co-workers there will be no displays of romantic affection between unmarried couples, including holding hands, kissing and romantic embraces. It is very important that all staff members, whether romantically involved or not, avoid even the appearance of impropriety. If you err, always err on the side of caution, conservancy and modesty.

## **31. Safety of Camp Community**

As a program for children and youth, we must insure the safety and appropriateness of our camp community as a whole. Our policies on weapons, drugs, alcohol, tobacco, etc. (#3 and #44) are strict and non-negotiable. You may not leave site Sunday 2:00pm through Friday, conclusion of staff meeting. If any of these rules are violated, the violations are grounds for termination.

## **32. Shoes, Sandals and the rule of "Closed-Toe"**

Do not wear flip-flops or "Crocs"-styled shoes for any camp activities.

The familiar saying is, "If your feet can't go, YOU can't go." Camp days are very active, and we travel everywhere by foot. Our policy is that at no time should you be without shoes except in the shower, in the pool or in the bed. This is an effort to AVOID foot injury. We require either closed-toed shoes or strap-on sandals. No flip-flops or "Crocs." For activities involving running, leaving main camp or involving going into the woods (especially hiking, ropes initiatives course, Home-in-the-Woods, hikes, and group games), staff must wear "closed-toe" shoes or boots to avoid the chance of having your foot lanced by a stick jammed between the toes. While creek-exploring or boating, staff should wear water shoes, old shoes or strap-on sandals (no flip-flops or "Crocs") to avoid being sliced by sharp rocks or trash. Even a small foot injury makes you miserable. You may even want to have water shoes for the pool to avoid scrapes.

**33. Supervision of Campers and Minimum Supervision Ratio**

- A. Staff's primary responsibility is to create a safe, loving and learning environment for the camper. Staff should constantly be aware of signs and symptoms of illness, injury and abuse in order to create a safe environment for the camper. Awareness of natural hazards around the camp grounds also aid in camper safety.
- B. As a counselor, the staff member shall remain with campers at all times unless supervised by other staff.
- C. The Program Coordinator, Assistant Program Coordinators and Non-counseling Staff are also available as additional resource people and will assist counselors as needed and can generally be found by contacting the Office or checking the Program Board.
- D. During the overnight hours, counselors are responsible for leading evening devotions prior to bed, maintaining group behavior, getting campers ready for bed and reading campers to sleep. In addition, Counselors are required to stay in their cabin throughout the night except for emergencies where alternate coverage is arranged. In addition, counselors will be trained how to prevent/handle homesickness, bedwetting and other camper needs throughout the overnight hours.
- E. At no time shall a staff member enter a living space of the opposite sex.
- F. Staff/camper ratios that are to be followed during all programs run by Camp Bethel. Organizations who utilize our site and services for youth group activities are advised of the following minimum and preferred supervision ratios that we recommend for effective camper supervision:

Camper Age	Min # Staff	Preferred # Staff	# Overnight Campers	# Day Campers
0-5 years old	1	2	5	6
6-8 years old	1	2	6	8
9-14 years old	1	2	8	10
15-18 years old	1	2	10	12

- G. For supervisory purposes, volunteers/CITs who are 15 years old or younger are not counted as supervisory staff.
- H. Minimum 80% of supervisory staff must be at least 18 years old, and all supervisory staff must be at least 16 years old and at least two years older than the minors with whom they are working.
- I. There should always be two staff members with a group of campers unless they are in an area where other groups are around and have easy accessibility to get help in the event of an emergency.
- J. Exceptions to the minimum and preferred ratios listed above are noted in the procedures for overnight campouts (minimum 2 staff of same gender as campers), showers and changing times (minimum 2 staff of same gender as campers), pool (minimum 3 staff), archery (minimum 2 staff), ropes course and climbing wall (minimum 3 staff), trips (minimum 2 staff) and adventure day outings (minimum 3 staff). In the event of an emergency when the ratios may not be met, use your best judgment and follow emergency procedures relating to camper supervision.

**34. Staff Manual**

You are expected to read your entire Staff Manual during Staff Training. Many sections of the Staff Manual will be covered in detail by leaders during Staff Training. Bring your Staff Manual to all staff meetings during camp weeks (Sunday and Friday) and to all sessions during Staff Training. We will give you additions to your manual throughout training and throughout the summer. Your manual is also your resource for stories, scripture references and emergency procedures, and it should be with you at most times during the camper day (in your backpack along with your Bible, water bottle, first-aid kit and charged (but OFF) cell phone).

**35. Swimwear**

Your swimsuits should be comfortable and appropriate for "rough" activity with campers. Your swim suit will be an oft-worn item of clothing, so bring a few that are rugged, quick drying, and comfortable. Women: Please one piece swim suits or tankinis only, no bikinis. Men: Trunks (with pockets) work well; no Speedo's. Please use good judgment for appropriate, rugged swim wear. Err on the side of conservancy, caution, and modesty.

**36. Term of Agreement and Hours of Work**

In general your term of agreement in 2019 is from May 27 through July 20; (Adventure and Coordinator Staff work through July 27). See *Record of Agreement*.

**37. Termination Procedures**

Voluntary termination by an employee may be initiated verbally or in writing at any time. Unless otherwise provided for in a written agreement, two weeks' notice is preferred.

The involuntary termination of any summer camp employee requires the approval of the Camp Director following appropriate investigation and/or consultation with the OMC Executive Committee and the District Executive. Employees may be placed on unpaid leave pending completion of the aforementioned investigation.

Upon consultation with the Camp Director and the Outdoor Ministries Committee of the Virginia District, the Employer has the right to terminate your contract for any reason, including violation of the scope, duties, or terms of your contract. Should the contract be terminated, you will be paid for days worked.

All employees are employed at will.

**38. Time-Off/Unpaid Leave/Wellness Breaks**

- A. **Time Off:** Weekends/days where you are naturally off duty. Primarily 8:00pm on Friday through 2:00pm on Sunday.

Counseling Staff receive time off on most weekends from 8:00pm on Friday through 2:00pm on Sunday during their Record of Agreement commitment while coordinator staff receive time off on most weekends from 8:00pm on Friday through 12:00pm on Sunday. The two weekend exceptions are 1. The weekend during staff training, all staff are still in training throughout that weekend and 2. The weekend following the end of our Week 6 of camp. We ask staff to stay on-site Friday evening through Saturday at 12:00pm for staff closing and duties.

**If activities/choices during time off detract from your ability to work with children, your contract could be terminated.**

**B. Unpaid Leave:** *Scheduled time to be away from camp for personal reasons.*

**Please do not schedule any unpaid leave during your training or working camp weeks.**

In general your Record of Agreement is a commitment from May 27 through July 20 (Adventure Staff, Day Camp Counselors and Coordinators work through July 27), and you are requested to commit your time fully. **If possible from May 27-July 20, please avoid scheduling family vacations, committing to wedding-weeks, and planning mid-week appointments. Plan ahead to complete personal business before or after camp or on Saturdays during camp.** If time away is unavoidable, we allow for unpaid leave with advance notice. Times when you leave site for personal reasons are considered unpaid leave. Any time you know in advance that you will need unpaid leave (college orientation, etc.), inform the Program Coordinator of the dates as soon as possible.

If you become sick or injured, unpaid leave and a substitute will be arranged by the APCs. If, at the request of a physician, a sick leave or rest period is required, the camp agrees to provide such unpaid leave. In the event of death in the family or family emergency, the camp agrees to grant unpaid leave, and this will be coordinated between the staff person and the Director and/or the Program Coordinator.

**If activities/choices during unpaid leave detract from your ability to work with children, your contract could be terminated.**

**C. Wellness Breaks:** *Time taken away from your unit to recharge/rest/address personal needs in the spirit of making you a better counselor.*

As a counselor, we expect you to be with your campers throughout the entire camping period **without interruption**. You will generally live with your campers day and night from Sunday afternoon through Friday dinner. Wellness Breaks can be scheduled at the convenience of the camp program. Taking time away from your unit is optional; it is not a requirement. Working in coordination with your co-counselor(s), you may arrange appropriate Wellness Breaks, totaling up to 2 hours per day. Wellness Breaks may only be arranged during activities led by program staff, (i.e. crafts, nature lesson, swimming, etc.) or when coverage is provided as approved by the APCs. Only one counselor from a unit may be away at a time. Also, Coordinators and Non-counseling Staff will arrange an afternoon or evening big game with your campers or help with bedtime stories in order to give counselors some down time during the week.

During Tenderfoot Mini Camps (2-night camps), Wellness Breaks are not available except in extreme emergency. Wellness Breaks are not available for Day Camp staff on duty during Day Camp hours (8:00am-5:30pm) except in extreme emergency.

The intensity and efficacy of the small-group process and philosophy (see "FNSPR" in your Staff Manual) is highly dependent on you, as the counselor, to be present and aware of your group's continuing evolution and movement through the group-building process. Counselors who insist upon frequent periods of time-off are apt to miss crucial events in the small-group process. Opportunities for Wellness Breaks are not to be abused, nor will counselors schedule Wellness Breaks together unless approved by the APCs. **If activities/choices during Wellness Breaks detract from your ability to work with children, your contract could be terminated.**

### 39. Tips or gratuities

Staff should not accept tips, gratuities or gifts in exchange for their work. For insistent donors, encourage a gift to the camp.

### 40. Training for Staff

A. All long term Summer Staff will participate in a Staff Training session that is 10-14 days in length.

**B. 2019 Staff Training will begin 3:00pm Monday, May 27, 2019 and end 8:00pm Friday, June 7, 2019.**

C. Each training is mandatory in order to serve, and is provided free to all employees and volunteers.

D. Short term staff (volunteers) will receive a shorter version of training. For CITs (ages 15-17) this is met by requiring a four day training session. Volunteers over the age of 18 are requested to attend one of two volunteer training days prior to the camp season. In addition, they are required to read their Staff Manuals. The volunteer training day and reading of the Staff Manual will fulfill the 24-hour training requirement.

### 41. Training for Staff: Late Hires

In the event that a Staff Member must be hired after the start of the summer season, it is important that he/she be properly trained in policies, procedures and responsibilities. This will be done through an apprenticeship program where the new hire will shadow a staff member for a period of a week (or longer if needed). In addition, the Director and/or Program Coordinator will review critical policies, procedures and other formalities that the staff member should be aware of and fully know.

### 42. Training for Staff: Mid-Summer In Service

A. Mandatory weekly staff meetings (Sunday 2:00pm and Friday after closing) are partly to provide in-service training.

B. Throughout the summer other periodic training sessions/meetings will be held to motivate and encourage staff. Other individual and group meetings will be held to discuss the summer program and their personal performance level.

C. Evaluation forms are available for staff to complete upon request, which evaluates themselves as well as the program. Staff are also encouraged to meet individually with the Assistant Program Coordinators to discuss performances, issues or grievances.

### 43. Vehicles, Parking, Driving

You are encouraged to carpool as much as possible. Staff vehicles will be parked during the week in the Ark Parking Lot. Staff will avoid having to retrieve something from their car during the camp week. Vehicles should be in Ark Parking Lot by 1:55 Sunday afternoon on camper weeks. On weekends, staff should avoid driving to and from their cabin to load and unload gear. Camp speed limit is 5 mph; radios should be off or inaudible outside the vehicle; do not make purposeful vehicle noise. Counselors will NOT have camper activities near any vehicle parking area. Staff are not allowed to drive vehicles off paved/gravel roads anywhere on camp without

express permission from the Camp Director. Speed on Bethel Road should be kept below 20 mph. Always wear safety belts in moving vehicles.

Do NOT use the gravel road between the Craft House, Grandmother Oak and Crowder/Graybill Houses.

Use of camp-owned vehicles is for full-time camp staff only, or as assigned by the Camp Director or Program Coordinator.

Vehicles are subject to random search by local law enforcement with reasonable suspicion or reports of the appearance of impropriety including, but not limited to, drugs, alcohol, or weapons.

#### **44. Weapons**

No weapons of any kind will be allowed on site, including storage in personal vehicles, luggage, staff housing, etc. Weapons on site will be grounds for termination.

#### **45. Weekend Food**

Adult summer staff are encouraged and welcome to remain on site over the weekend to build staff unity and to encourage ownership of the camp. On weekends when the camp kitchen is cooking, staff are welcome to these meals at their designated times with at least 2-hours advanced notice to the kitchen staff, and staff who eat must assist the kitchen staff with the set-up and clean-up. At the end of each week, any extra food that the kitchen has will be moved to staff housing for the staff to enjoy. Staff are welcomed to use this food as their weekend meals or make other plans for themselves. The Coordinators will schedule occasional Saturday night special meals, optional to staff. During contract (including weekends), Adult Employees are entitled to overnight lodging at the camp and use of program equipment for herself/himself and no others at no charge, and Adult Employees are entitled to free meals when the camp kitchen is serving and provisions for meals as described above when the camp kitchen is closed.

#### **46. Weekend Guests**

No guests are allowed on site from Sunday 2:00pm through Friday 6:30pm without 2-day advance permission from the Camp Director.

Adult summer staff are encouraged and welcome to remain on site over the weekend to build staff unity and to encourage ownership of the camp. With at least 2-day advance notice to the Camp Director and approval thereof, you are welcome to have an adult guest come and spend the weekend with you at the camp from Friday 8:30pm through Sunday 10:00am. No guests are allowed during the camp week from Sunday 2:00pm through Friday 8:00pm unless approved by the Camp Director. Guests are expected to follow the same rules and guidelines as staff members. If you have a guest who breaks policies or camp rules, it could be grounds for termination of your contract. Your guest is welcome to stay with you in the staff cabin or in an unoccupied cabin, depending on space and appropriate courtesy to other staff. Unannounced or unexpected guests may not stay overnight on site unless approved by the Camp Director.

Guests (and staff) of the opposite sex, obviously, sleep in separate facilities. Your guest is welcome to participate in whatever staff trip, meal, or activity we have planned, as long as your guest does not usurp a staff member's spot in that activity. Use good judgment and be courteous to other staff when you have a guest. Your guest should not detract from our summer experience as a staff, and your guest should honor the traditions and special relationships between staff members. Your guest should be willing to help with some manual labor and cleaning as payback for a free visit.

#### **47. When Out In Public**

As a member of the Camp Bethel summer staff (whether paid or volunteer), you are now a representative of everyone associated with the camp. Also, the camp (and your salary) is funded by the people of the Virginia District Churches of the Brethren. You may not recognize them, but people out in public recognize you as staff from Camp Bethel. When off camp property, please represent Camp Bethel well with appropriate language, behavior, driving practices, volume of car stereo, etc. Avoid even the appearance of impropriety. If activities or choices during time-off detract from your ability to fulfill your job description (working with children) or blatantly misrepresent the ministries of Camp Bethel, your contract could be terminated.

#### **48. Protocol to Prevent One on One Camper/Staff Interaction**

Campers must be supervised at all times, BUT staff/volunteers MUST avoid being alone with a camper at any time outside the view of other staff members. Staff and volunteers must avoid situations of one staff/vol and one camper. This is for the protection of the camper and the staff member, as well as the camp. In restroom or shower, at least 2 staff/volunteers should supervise campers with voice from outside the room. In a health care setting, the Health Coordinator must avoid one-to-one scenarios, and if necessary, must inform the Camp Director when s/he is in temporary sole supervision of a sick or injured camper. In the case of campers with special needs, staff/volunteers must avoid one-to-one scenarios, and if necessary, must inform the Camp Director when s/he is in temporary sole supervision of said camper. At no time will the APCs, Program Coordinator, or Camp Director assign a counselor to be in sole supervision of only one camper.

### **LASTLY, AND MOST IMPORTANTLY:**

#### **49. The Seven Absolutes of Camp Counseling**

1. Never assume your playful sarcasm, especially use of nicknames, will be taken as you intend it.
2. Always follow through on what you say you'll do. Never promise what you can't deliver.
3. Always intervene if campers put each other down. Never believe a camper who says, "It doesn't bother me."
4. Check in with every one of your campers every day, and be sure to ask the right questions.
5. Make something special out of unstructured time and transition time, especially bedtimes.
6. When in doubt, don't!
7. It is always better to be thought of as a great counselor by your director, than to be thought of as a cool one by your campers or co-workers.

#### **50. Your Director's Expectations**

Camp Counseling is a HARD job. Let's just get that right out and in front. I promise you, that if you do your summer job right, it will be a challenge, both physically and emotionally. In return, your job done right will affect dozens of children and youth, and will likely change their lives: a priceless reward! By summer's end, your muscles will be taut, your hands tough, your hearing, vision, taste, and

smell will be keen, bugs won't bother you, and the ever-present sweat on your brow and dirt under your fingernails will be a natural extension of who you are. Living in the mountain air and coming and going with the sun will become a part of who you are and who you will be.

But, as with any job, it all comes down to what YOU make of it. If you choose to "get into it" and enjoy it no matter what, then you could possibly have the best summer of your life thus far. If you choose to complain and whine, then this could be the most miserable summer of your life. Camp Counseling is a HARD job. Is there anything worth-while in life that's not worth working hard for? It's your decision.

Having said that, here are specific expectations I have of you, just so we all see a few of the "unwritten rules" actually written and some repeated:

- a. Strictly follow staff policies, camp rules, equipment procedures, and procedures for D'Hall, Maintenance, pool, ropes course, etc.
- b. Get in the pool with your campers, every time.
- c. Sing the songs, play the games, with the campers.
- d. Read your campers to sleep EVERY night, including MS/HS High kids.
- e. Work long and hard on your Love Gift.
- f. On trips, strictly follow safety guidelines.
- g. Campers first, counselors last, especially at meals and cook-outs.
- h. Take notes during Staff Training and at Staff meetings.
- i. No profanity, inappropriate slang, or blatant adult innuendo around campers or staff minors.
- j. On camp-out night, read the campers to sleep, and sleep in the tent or under the tarp with them.
- k. When the pressure is on, be creative, change the scenery, surprise them.
- l. Be on time for meals, crafts, and any activities requiring other people's time.
- m. Be legal, safe, and responsible on weekends so that you are refreshed, rested, and ready on Sundays.
- n. Use prevention as the best First-Aid and as the best behavior management. Prevention, NOT reaction.
- o. Plan to be at camp through 8:00pm each Friday night. We will try to end on time or earlier, but if we don't, plan to stay until we do.
- p. You are expected to keep your cabin clean, to keep your staff housing clean, to keep every space you use CLEAN.
- q. Leave each area you use, on or off camp property, cleaner than you find it. This includes hauling old trash out of the woods.
- r. *Here's the secret to your future employability for the rest of your life:* You were hired because we view you as a leader. As such, we fully expect you to take initiative, lead by example, and be the "I'll do it!" person when there are work tasks to accomplish. Even better, we expect you to RECOGNIZE when help is needed and to start helping without being prompted and to get others to help.



### **51. You Are Important to our Camp Culture:**

There are camps that do the most simple things in the most extraordinary ways; camps that totally commit themselves to fulfilling their mission. (See: *Camp Statement of Purpose and Mission; and Staff Standards.*) At Camp Bethel we take incredibly precise steps to ensure each aspect of our camp is aligned with our mission and is indeed serving it; from the songs we sing, to the ways we interact with everyone on site, to the way we handle conflicts. And since our Christian faith is our ultimate purpose for existing as a site and program, the single greatest influence on our "camp culture" is how we strive to live together in intentional Christian Community. For example, there is NO bullying, pranking or hazing here. Instead of taking joy from laughing at others, we take joy in our ability to laugh at ourselves. The specifics of our Camp Bethel culture that have developed over the decades are too numerous to list here, so suffice it to say that in all interactions, words and deeds, you should ask yourself the familiar question, "What would Jesus do?" Other questions to ask include, "What does this say about who we are at Camp Bethel? Is this the story we wish to tell about our time at Camp Bethel? Does this accurately represent our mission together?" Indeed may Paul Bowman's words from his 1927 Camp Bethel dedication speech ring true: "Let this camp stand for all that is good, true and beautiful in human life and in human relationships." May we continue TOGETHER to have "high Christian communion of clean hearts and minds."



# Camp Bethel's Small-Group Camping Philosophy: *Relational Ministry*:

Important Aspects of the Small-Group Summer Camping Program at Camp Bethel:

*A culmination of 90 years of Camp Bethel ministries and over 60 years of small-group camping philosophy.*

## **Read 1 Corinthians 12:12-27.**

Every aspect of the small-group summer camping program follows a common function. The small-group philosophy centers on what it means to be a part of the Body of Christ, (from 1 Corinthians 12). Our function, (also stated as our Mission or our "End Goal"), is for each camper to gain a better understanding of (a) their part in Christ's Body, and (b) their relationship with the Creator, with others, and with creation. Form follows function. Aspects of our form are as follows:

### **1. Small Group Emphasis:**

10-12 campers and 2-4 counselors combine to make a unit (small group); low camper to counselor ratio; campers develop significant relationships with mature adult Christian counselors and with one another; group does "everything" together all week; there is NO individual free, unsupervised time; high supervision and safety with low accident rate; family/community building. Camp Bethel has 8-13 units per camp week.

Counselor Application: \*You're here because we expected you to be a mature Christian role model  
\*Counselors will supervise campers **at all times**  
\*Lead cooperative team-building games, rather than competitive games  
\*Use language and plan activities that intentionally facilitate group building

### **2. Sanctity of the Small Group:**

Each unit (group) plans their own week on the Program Board; units are not disturbed in their "body-building" process; units interact with other units only at appropriate times, (ex: whole camp eats most meals together; large group games and special all camp evening activities; Units will not do the challenge course with another unit, and they will not camp out/sleep out/Home-in-the-Woods together); every camper's location is known at all times because of the Program Board.

Counselor Application: \*Facilitate program scheduling that includes the needs and desires of all campers  
\*Communicate your group's location to the program director via the program board

### **3. Experiential Christian Education:**

More time is spent living and doing things together as Christians than is spent listening to lecture; Christian truths are learned by activity supported by Bible study, worship, and camp curriculum; relationships and activities with counselors and volunteers are the foundations of the campers' learning; age-appropriate Christian education goals; creative metaphor with Biblical back-up; daily Bible use; most activities have applicable scriptural/Christian metaphor and meaning; nightly worship in both large and small groups; we constantly seek the "teachable moment".

Counselor Application: \*Relate each activity to a life or Biblical lesson  
\*Attend nightly worships unless otherwise arranged with Program Coordinator  
\*Lead night-time devotions each evening before bed  
\*When leading group games or filling transitional time, choose games/activities that enhance each camper's overall experience, (ie: non-competitive; creative free play; emulate love and care for each other.

### **4. Emphasis on the natural world and stewardship of God's creative Earth:**

We hold camp in "a place apart" (instead of a city street) because immersion into a "wilderness" setting invites openness to risk, self-examination, consideration of our/my place in the universe. This, in turn, creates a rich atmosphere for new relationships (with God, with others, with Earth). Nature study and Bible study are BOTH forms of God's revelation of love; low-impact site camping; active participation and interaction with God's creation; the supporting facility should exemplify good stewardship with efforts to recycle, compost and purchase "Earth friendly" supplies and foods; activities are more inclined to involve interaction with the camp setting, (ex: hiking as opposed to kickball; "Home-in-the-Woods" as opposed to playground); we do things at camp you CAN'T do in other settings; we have 470 acres of forests, fields, ponds, creeks, trails, and hills... we use them!

Counselor Application: \*Facilitate unstructured play time interacting with God's creative Earth  
\*As often as possible, your activities should be out-of-doors, immersed in nature  
\*Follow low impact camping methods, and exemplify eco-friendly practices

### **5. The Small Group's Dynamics and Make-up: *The process of Relationship:***

Heterogeneous inclusion: our acceptance of all applicants, including scholarship & Special Needs campers.

The foundation of the summer camp is the group. Throughout the summer, in addition to the attention we give to the individual camper, our focus is continually on the "family unit" living as the Body of Christ. The framework developed by Dr. Bruce Tuckman is particularly applicable to the small-group setting. Tuckman describes five stages in the progression of small group development: forming, norming, storming, performing, and reforming/adjourning:

**Forming:** individuals become a group (1<sup>st</sup> night and 1<sup>st</sup> few days).

**Norming:** group interactions take on patterns, styles, codes and "norms."

**Storming:** any group difficulties eventually come out into the open; needed for true relationship.

**Performing:** problems are confronted; group realizes their potential; functions as the Body of Christ.

**Reforming/Adjourning:** preparations and discussions before returning to the "real" world.

**Is there a Stage 6: Transforming?**

**Focus, Behavior & Challenges of Specific Stages of F.N.S.P.R.:**

	Group Focus	Characteristic Behaviors	Challenges
<b>Stage 1 Forming</b>	saying hello	"safe" subjects; favorite toys, games, movies, TV shows, "have you seen...?" Members look for what they have in common	"spilling"; early panic; homesickness; separation anxiety
<b>Stage 3 Norming</b>	Establishing an identity and culture	working out class/bunk/group agreements; what is acceptable; how do we want to be with one another	lack of total group participation; regression
<b>Stage 2 Storming</b>	working out rivalries, authority & rules	pecking order; teacher's/counselor's favorite; struggle for roles: leader; follower; instigator; mascot; helper; rebel; etc.	chaos; resistance to rules; cliques; scape-goating; rebellion; isolating
<b>Stage 4 Performing</b>	High performance-accomplishing	high level of cooperation; "camp spirit"; classroom productivity; individual members appreciated for what they can contribute	regression; over-stimulation; exhaustion; wanting to "get it all in"
<b>Stage 5 Adjourning Reforming</b>	taking stock & saying goodbye	countdown; reminiscing; best/worst/most fun/scariest; taking stock; what we did, made, lost, missed, how we grew, improved; we mourn; we celebrate! Go!	regression; acting out or avoiding feelings; denying attachment; carving initials

Counselor Application: \*Be attentive to small group dynamics  
 \*No camper is ever to be left out. Check in individually with every camper every day  
 \*Know what stage your group is in at all times and use this knowledge  
 \*Work through other stages towards the Performing stage  
 \*Must experience some level of Storming (openness) to experience true Performing  
 \*Storming is not necessarily conflict; it's about openness and exposing the true self

**6. Progression of Programs:**

Each age level offers a new and more challenging/exciting program; this makes for long-term constituency; age-group efficacy and target marketing; trip-camping and "out" camping support this progression. Promotional language reflects this progression.

Counselor Application: \*Talk with campers about what program they want to participate in next summer  
 \*Show young campers locations of Home-in-the-Woods; high ropes; Adv Village

**7. Family Style Meals and Cook-Out Program:**

Meals are not just a "get-them-in, feed them, get-them-out" time; meals are a major part of the Experiential Christian Education each camper receives; family style manners/values/expectations; table fellowship similar to Christ's; Cook-out teaches self-sufficiency and basic cooking skills; Cook-out provides greater small group sanctity.

Counselor Application: \*Model and instruct your campers on family style meal manners/values/expectations  
 \*Assign runner, assure everyone gets a portion from first serving, pass serving bowls  
 \*Make campers aware of other food options such as PB&J, Salad Bar and fruit.  
 \*Encourage, but do not force campers to try new foods  
 \*Instruct, lead, and involve campers in cook-outs, including fire building and food prep

**8. Camping (to camp) implies a VERB and implies ACTION:**

We believe there should be EFFORT required at camp to provide for one's daily needs, (food, shelter, clean bathrooms, set tables, etc.). When entering into this type of setting, a deeper sense of our own creativity emerges. We experience the closeness of living with and caring for ourselves and others, analogous to the community of early Christians described in Acts 2 and 1<sup>st</sup> Corinthians 12.

Counselor Application: \*Lead your unit in completing daily duties as assigned on the duty board  
 \*Maintain a clean cabin/AV/camp including bathrooms  
 \*Keep campers active to ensure fewer incidences of injury & homesickness  
 \*Establish an atmosphere of mutual care and respect for each other and camp

## Affidavit:

### Regarding Staff/Volunteer Conduct and Contact with Campers and Minors

I (print your full name) S\_A\_M\_P\_L\_E understand and accept that I am a caretaker of children. I understand that there is a clear power difference between myself and campers/minors (money, mobility, authority, experience, knowledge, different set of rules). I understand that inappropriate sexual contact with or physical abuse of a camper can have severe emotional and psychological effects on that camper that can last a lifetime. These reactions can be so severe, they can require intensive professional intervention which can be disruptive to the victim's life as well as time-consuming and expensive.

#### Guidelines for the Discipline of Campers and Minors

I understand and accept the following:

- Staff/Volunteers may NOT, under any circumstances, hit a child/minor; use abusive or derogatory language, use fear or intimidation, incorporate pain or discomfort or strenuous activity as punishment, or withhold/withdraw food or drink as punishment.
- Staff/Volunteers need to ask for help: A Staff/Volunteer who encounters a particularly difficult child/minor will seek the assistance of supervisory or administrative staff.
- In all dealings with children/minors, Staff/Volunteers should strive to **respond** (as opposed to react) to children/minors.

#### Guidelines for Contact with Campers and Minors

I understand and accept that when touching campers, the following guidelines should be followed:

- Only on the hand, shoulder, or upper back;
- Never against a child's will or discomfort (unless in the case of clear and present danger of the child), whether expressed verbally or non-verbally;
- Always in the company of other adults;
- Never when it would have the effect of over-stimulating the child (including tickling); and
- Never in a place on a child's body normally covered by a bathing suit, unless for a clear medical necessity, and then only with supervision from another adult.

#### Virginia Law § 63.2-1509 Concerning Child Abuse or Neglect and Reporting

In Virginia, those who work with children and minors, disabled persons, senior citizens, or other identified vulnerable populations are **MANDATORY REPORTERS** of suspected or disclosed abuse. **YOU are a mandated reporter.** If you have reason to suspect that a child/minor is the victim of emotional, physical, or sexual abuse or neglect, he/she must immediately report the suspicion to the Camp Director. The Director will then gather and record the suspicions and file a report to Child Protective Services. This also includes knowledge of an incident, or an imminent risk of serious harm. Abuse/neglect includes: **PHYSICAL ABUSE** occurs when someone inflicts bodily harm, resulting in physical injuries that may or may not be visible (i.e., internal trauma). This may include bruises, burns, cuts, black eyes, broken bones, head trauma, or internal injuries. **SEXUAL ABUSE** includes direct and indirect acts. Examples of direct acts include touching a minor's private areas or coercing/forcing him or her to touch another's private areas, oral-genital contact, and digital or penile penetration-vaginal or anal. Indirect acts include exposing genitals, showing pornography photographing a child doing explicit acts, and voyeurism-observing a minor undress, bathe, or urinate. **EMOTIONAL ABUSE** occurs when an adult endangers the mental health and emotional development of a child. This may include an absence of affection and encouragement, or an abundance of negative verbal statements. **NEGLECT** occurs when a child's needs for food, shelter, clothing, supervision, medical attention, and emotional support have not been met.

You can be held liable by both the civil and criminal legal systems for intentionally failing to make a report. You are required to report as soon as possible, but no later than 24 hours after having a suspicion of a reportable offense. First offense of failure to comply is a fine of not more than \$500; second offense is a fine of not less than \$1000. In cases of rape, sodomy, or object sexual penetration, failure to report shall result in Class 1 misdemeanor charge

I am aware of the following:

- definition of a "mandated reporter"
- purpose of child protection laws
- clarification that a report is based on suspicion of abuse, not proven abuse
- summary of the reporting procedures (time frame, reporting agency, information requested)
- penalty for not reporting

#### Guidelines for Staff/Volunteers working with Children

I understand and accept the following:

- There is no "hazing" of campers by campers or Staff/Volunteers, and there is no "hazing" between Staff/Volunteers.
- Campers will not be subjected to "initiation" rites that are abusive in any manner.
- There will be double coverage of campers by Staff/Volunteers during changing times.
- Younger children should be encouraged to change their own clothes as much as possible.
- Campers will not be alone with a Staff/Volunteer in his or her quarters.
- A Staff/Volunteer will under no circumstances share a bed or sleeping bag with a camper or a minor.
- Staff/Volunteers will set limits with children who "cling" or hang on them.
- Staff/Volunteers will not give back rubs unless another adult is present, and then only with clothes on.
- Tickling or teasing a camper to the point where that camper is out of control is unacceptable.
- No pillow fights, wrestling matches, etc. because they can over-stimulate the campers quickly.
- Overnights need a minimum of two Staff/Volunteers, and there needs to be at least one Staff/Volunteer present of the same gender as the campers.
- Staff/Volunteers sleeping together on overnights is grounds for dismissal.
- Romantic lives of Staff/Volunteers cannot, under any circumstances, be shared with campers.
- Staff/Volunteers should stay out of cabins other than their own after lights out at night unless on specific camp business.
- Male Staff/Volunteers working with adolescent females need to be aware of the tendency for this group to develop hidden or secret romantic fantasies.
- Whatever is done with campers and minors should be done in broad daylight, with company!

#### Other Instructions

I agree to the following:

Furthermore, I am attesting to the fact that I have read over, understand and accept and will abide by the information and rules outlined in this document.

Signed S\_A\_M\_P\_L\_E Printed name S\_A\_M\_P\_L\_E Date \_\_\_\_\_

Witness S\_A\_M\_P\_L\_E Printed name S\_A\_M\_P\_L\_E Date \_\_\_\_\_