

2021 SUMMER CAMP HEALTH PLAN

CAMP BETHEL IMPLEMENTATION
OF COVID-19 RISK MITIGATION



**Our Health Plan ASSUMES
that ALL participants, staff,
and visitors are contagious,
AND...**

**CAMP BETHEL IMPLEMENTATION
OF COVID-19 RISK MITIGATION**



Our Health Plan will adapt and update as information improves and conditions evolve.

**CAMP BETHEL IMPLEMENTATION
OF COVID-19 RISK MITIGATION**

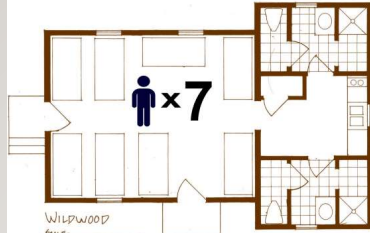


REOPENING GUIDELINES



LOCAL & NATIONAL SCIENCE

50% LODGING CAPACITY



Which reduces overall on-site population by 40%.

Maximum 9 Camper Units per week (instead of 18).

STAFF RESTRUCTURE



Each co-ed Unit has 3 counselors + 1 Unit Coordinator
Fewer Units = Fewer Staff

PRE-CAMP SCREENING

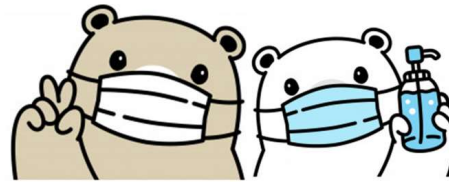


MODIFIED CHECK-IN & CHECK-OUT

Unit Autonomy = Small Group Camping

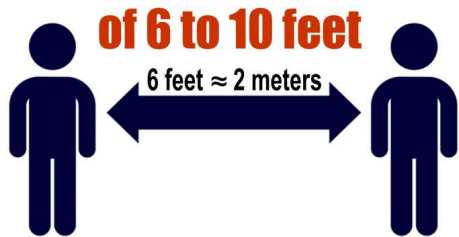


FACE MASK REQUIRED INSIDE except eating, sleeping, showering.
AND OUTSIDE except swimming or 6+ feet from others.



Cover your mouth AND nose.

PHYSICAL DISTANCING



As much as possible at all times.
10+ feet between Units at limited all-camp events.

ENHANCED CLEANING



AND SANITATION

and MUCH, MUCH MORE



- ◆ Meals: outdoors OR staggered
- ◆ Additional Staff Training
- ◆ Staff "Healthy Behavior Agreement" for off-duty times.
- ◆ Enhanced Health Care on site
- ◆ Communications if/when we have COVID-positive
- ◆ Ventilation (box-fan filters)
- ◆ Transportation
- ◆ Activity modifications (ex: Pool)
- ◆ All the things we have to Buy, Borrow, or Build before June!

REOPENING GUIDELINES



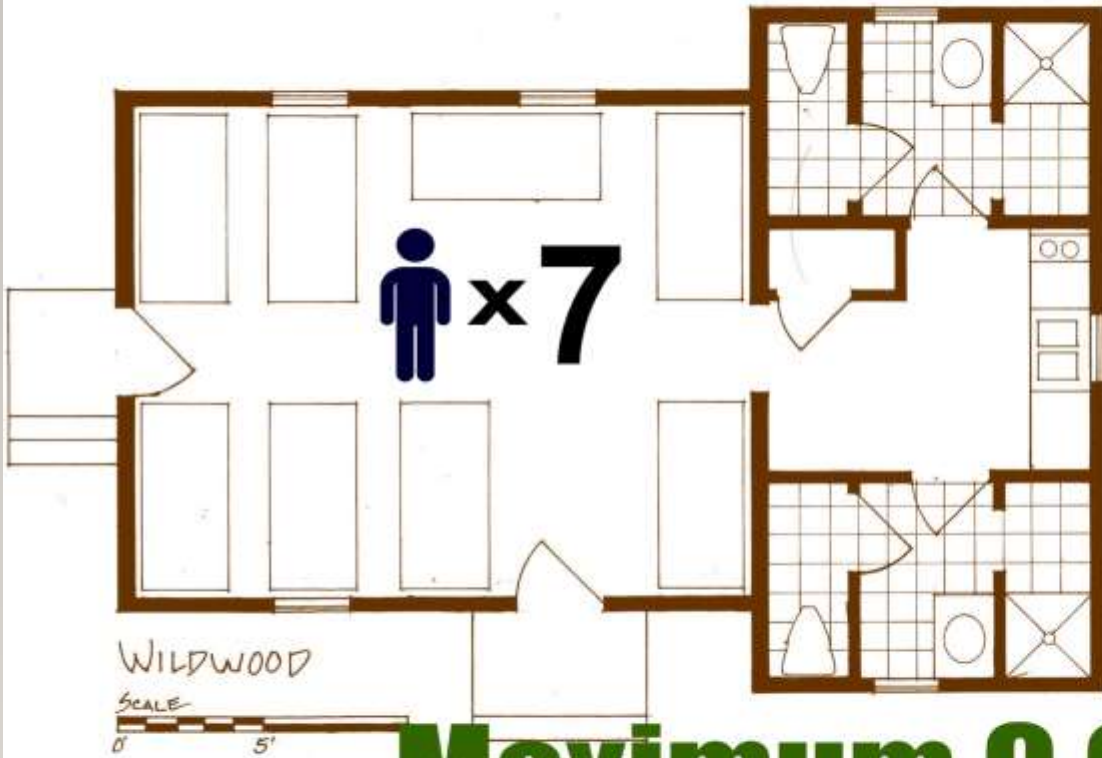
VDH VIRGINIA
DEPARTMENT
OF HEALTH



EH
& **E** ENVIRONMENTAL HEALTH
& ENGINEERING, INC.

LOCAL & NATIONAL SCIENCE

50% LODGING CAPACITY



Which reduces
overall on-site
population by 40%.

**Maximum 9 Camper Units
per week (instead of 18).**

STAFF RESTRICTURE



Each co-ed Unit has 3 counselors + 1 Unit Coordinator
Fewer Units = Fewer Staff

PRE-CAMP SCREENING



MODIFIED CHECK-IN & CHECK-OUT

Unit Autonomy = Small Group Camping



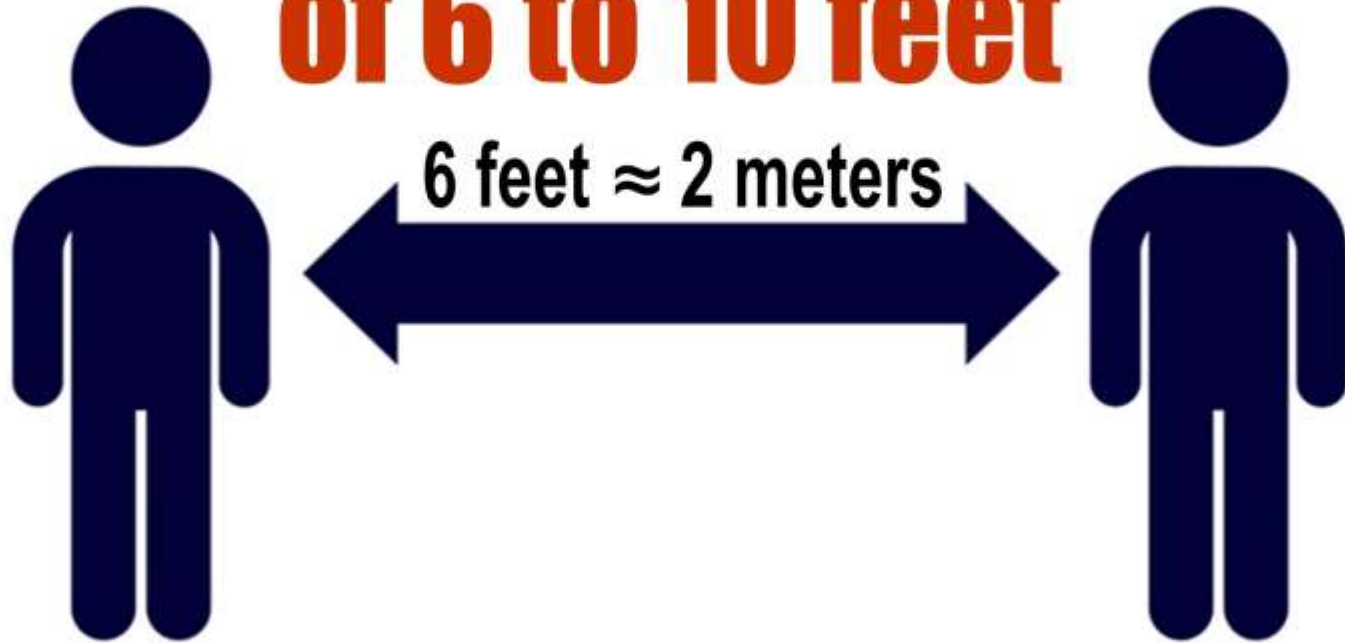
FACE MASK REQUIRED
INSIDE except eating, sleeping, showering.
AND OUTSIDE except swimming or
6+ feet from others.



**Cover your
mouth
AND nose.**

PHYSICAL DISTANCING

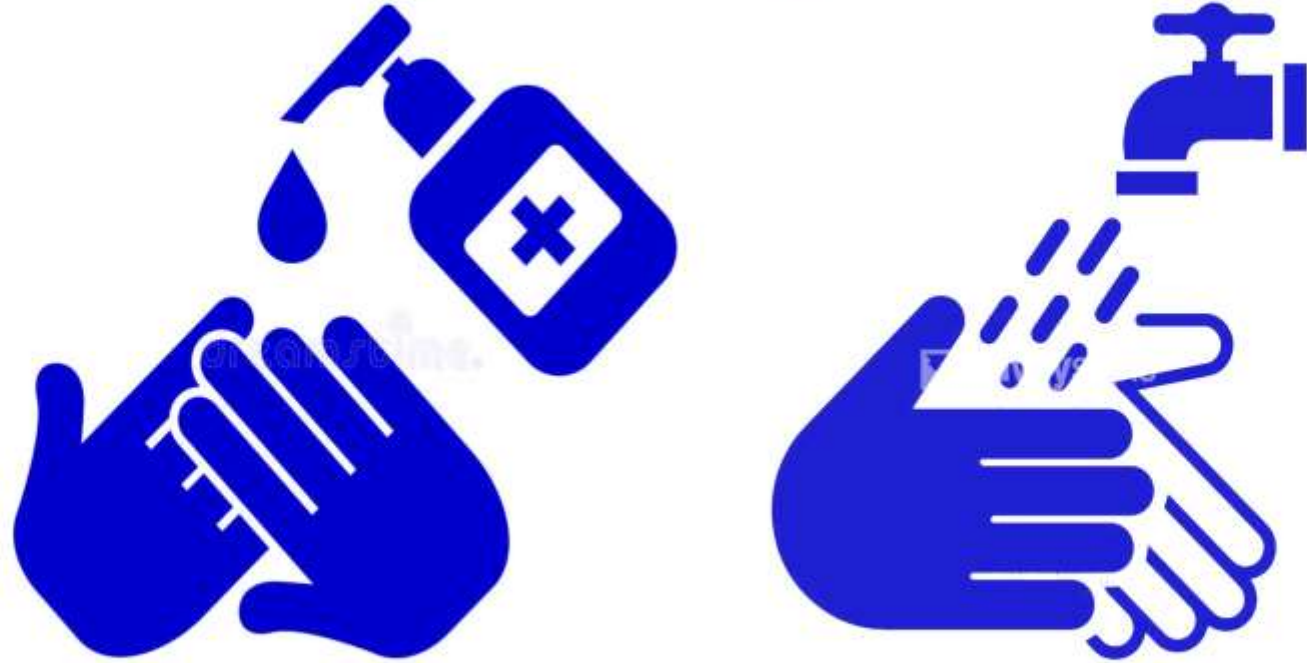
of 6 to 10 feet



As much as possible at all times.

10+ feet between Units at limited all-camp events.

ENHANCED CLEANING



AND SANITATION

and MUCH, MUCH MORE



- ◆ Meals: outdoors OR staggered
- ◆ **Additional Staff Training**
- ◆ Staff “Healthy Behavior Agreement” for off-duty times.
- ◆ **Enhanced Health Care on site**
- ◆ Communications if/when we have COVID-positive
- ◆ **Ventilation (box-fan filters)**
- ◆ Transportation
- ◆ **Activity modifications (ex: Pool)**
- ◆ *All the things we have to Buy, Borrow, or Build before June!*

QUESTIONS?

Jenna Stacy Mehalso,
Camp Bethel Program Coordinator
CampBethelOffice@gmail.com
540-992-2940

